



# SW-1

## Rotating Reflector Rotating Beacon

### Features

- Bright halogen bulb
- Gear driven reflector
- Corrosion resistant plastic base
- Two base finish options
- Economically priced
- Dome locking ring allows for easy bulb changes
- Five polycarbonate dome colors
- Easy mounting
- 12 VDC only

### Typical Applications

- Tow trucks
- Service vehicles
- Delivery vehicles
- Snow plows
- Construction equipment

### Description

The SW-1 offers a rugged rotating reflector beacon illuminated by a 50 watt halogen bulb in a low profile, eight inch housing. The halogen bulb's light is amplified by a gear driven parabolic reflector.

The SW-1 features a dome locking ring, which allows for easy bulb changes. The light is available in either a black or chromed plastic base, and in a variety of dome colors. With its sturdy three point mounting, this light is excellent for vehicles where visibility and simple mounting is critical.

### Specifications

#### Electrical Specifications

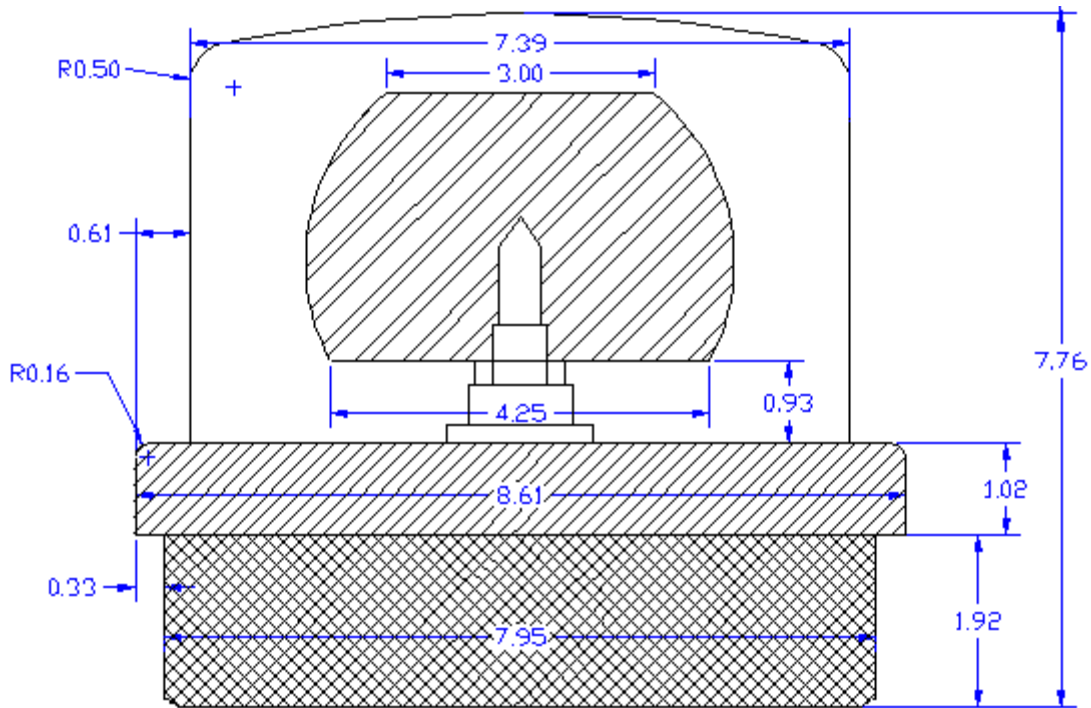
DC Voltage .....	12 V
DC Current .....	3.5 A
Estimated Lamp Life .....	200 hours
Lamp Brightness .....	108 cp

#### Physical Specifications

Height .....	7.7"
Diameter .....	8.6"
Flashes per Minute .....	65-75
Shipping Weight .....	4 lbs
Shipping Volume .....	0.77 ft <sup>3</sup>



# SW-1



## Model Number Information

Variant	Product Number
12V Chromed Plastic .....	SW1-12CP/*
12V Black Plastic .....	SW1-12BP/*

\* Specify Dome Color  
 A-Amber B-Blue C-Clear G-Green R-Red

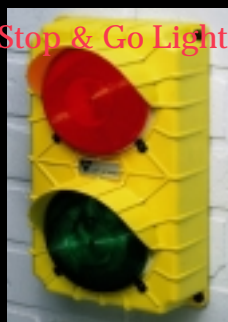
## Replacement Part Information

Part	Part Number
Amber Dome .....	206013
Blue Dome .....	206014
Clear Dome .....	206015
Green Dome .....	206050
Red Dome .....	206012
50 Watt Halogen Bulb GE#795 .....	426000
Replacement Motor .....	166039T

## Information is available for these additional Tri Lite/Mars products



Dock Loading Lights



Stop & Go Lights



Warning Lights



Cozy Personal Heating