

Lucite extensions
fit into the
cell holder

Mirror clips on
for around-the-
corner
illumination.

GOES WHERE OTHER LIGHTS CAN'T GO

THE CONDUCT-A-LITE

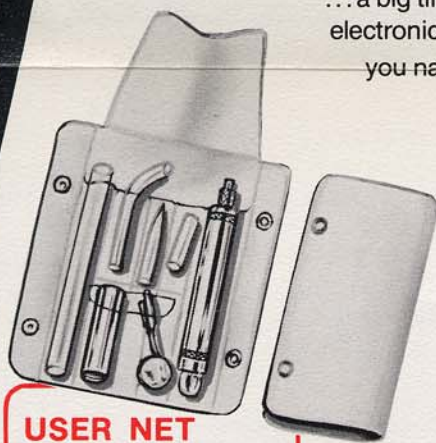
PROFESSIONAL ILLUMINATION KIT

Now! A new, professional lighting kit makes all hard-to-see, hard-to-reach areas easier to light. Use CONDUCT-A-LITE for exacting industrial/commercial inspection checks and repair work. The versatile, interchangeable extensions make CONDUCT-A-LITE a valuable tool for many professions.

CONDUCT-A-LITE is ideal for: ■ Industry... inspection of tools and dies, machined parts and castings; checking deep surfaces ■ Electronics... lighting miniatures parts is simplified for there is now no power line to restrict operators movements and Conduct-A-Lite is lightweight, easy to handle ■ Radio-TV repair... a big time-saver when it comes to lighting dark, small-space areas in the electronic business ■ Autos... inspecting cylinder wall, piston, gear box, you name it ■ Do-It-Yourselfers ■ Office Machinery ■ Hobbyists!

The CONDUCT-A-LITE kit consists of:

- 2-cell holder, of lightweight, sturdy aluminum. Can be button-pressed for instant on-off light; or light can be locked on.
- 1-cell holder to replace the 2-cell holder above for storing in pocket or for use in unusually small areas. Either holder accommodates all the following light conductors.
- 6" straight lucite light conductor for difficult-to-reach areas.
- 4" curved lucite light conductor for lighting around corners.
- 2½" straight lucite light conductor for pin-pointing lighting in limited space.
- Clip-on mirror. Attaches directly to any of the lucite conductors. Chrome-plated and distortion-free. When used in conjunction with the curved conductor, can virtually make light available around a corner in full 360° arc.
- CONDUCT-A-LITE operates on standard pen-light cells.



USER NET

\$

(less batteries)

The complete kit comes in a handsome, soft fold-up carrying case that fits into most pockets.

DISTRIBUTED BY