



DLMAG

Magnet For Portable Work Light Mounting



Features

- Securely attaches to flat, ferrous surface
- Adaptor cord will plug into any standard outlet
- Can be used with any Tri Lite luminaire
- Complies with UL standard
- Easy to install
- Economically priced

Description

Tri Lite's new magnetic mount kit fits all of our standard luminaires. It allows the user to get high illumination in places where it is not practical to mount a dock arm or permanent work light. The powerful magnet guarantees the luminaire will stay where you put it and the included 6 foot adaptor cord lets you power the luminaire from a standard outlet.

Typical Applications

- Illuminating cargo containers
- Illuminating rail cars
- Illuminating semi trailers
- Portable work light

Specifications

Electrical Specifications

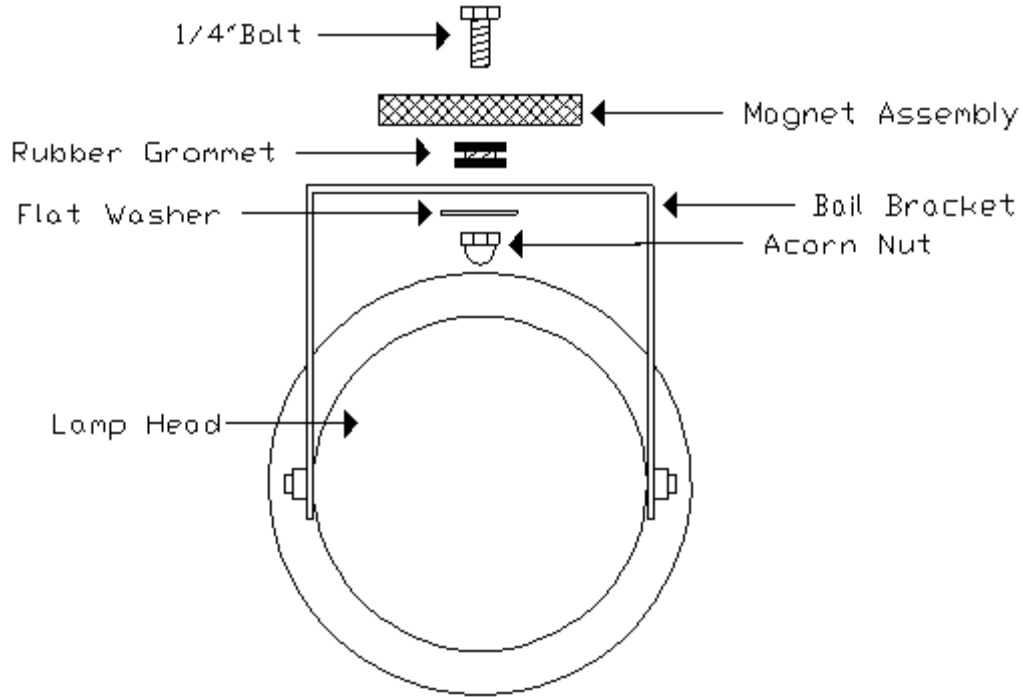
Cord Plug NEMA 5-15P
 Cord Socket IEC C-13
 AC Voltage 115V

Physical Specifications

Magnet Assembly Height 1.5"
 Magnet Assembly Diameter 3"
 Magnetic Holding Force 30 lbs
 Shipping Weight 1 lb
 Shipping Volume 0.77 ft³



DLMAG



Model Number Information

Variant	Product Number
Magnetic Mount.....	DLMAG*

*The mounting kit includes magnet, hardware and a 6 foot adaptor cord and can be used in conjunction with an INCHEAD, INCHEAD-P or HPSHEAD which must be ordered separately.

Replacement Part Information

Part	Part Number
Magnet	986100
Grommet	820101
Washer	320131
Acorn Nut	310130
Bolt	300503
Adaptor Cord	733002

Information is available for these additional Tri Lite/Mars products



Dock Loading Lights



Stop & Go Lights



Warning Lights



Cozy Personal Heating